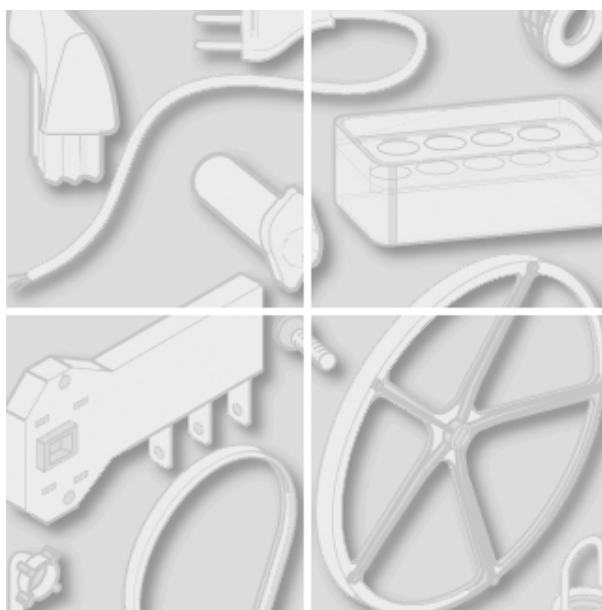


Merloni Elettrodomestici



Model type:
WGD1236TXU

Commercial code:

General notes

Technical Documentation guidelines

You can find herewith some generic information to simplify consulting of technical documentation:

1. Models of same range share the same exploded views, which report the richest set of spare parts:generally, a model does not necessarily have a related spare part for each particular shown on exploded views.

2. Some spare parts can not be represented directly on the exploded views (instruction booklets, specific kit, etc...). You can find those codes in the spare parts list with the same reference of particular where spares are installed or with references 099, 999. Instruction booklets, once managed, appear with 000 reference.

3. On the higher right site of each exploded view there is a serial number which indicates the beginning of the production of certain range:some models might have more than an exploded view for a given category, each distinguished by a different serial no.and linked to another spare parts list, In this case, serial no. is required to supply the right spare part code. Exploded view to be considered is the one with a more recent serial no. but previous than the one of the model that needs assistance.

4.Exploded views might require further updates even after publishing. Addition of new spares will go on following the already existing numeration references. Revision number of an exploded view is shown into last four digits of serial number into upper right hand corner.

5.The spare parts list associated to an exploded view shows related codes of spares managed for a certain model; for each spare part other informations are available:

REF: reference no of spare into a table; SUBSTITUTE: list of spare(s) which can replace a code but that keeps same functional characteristics

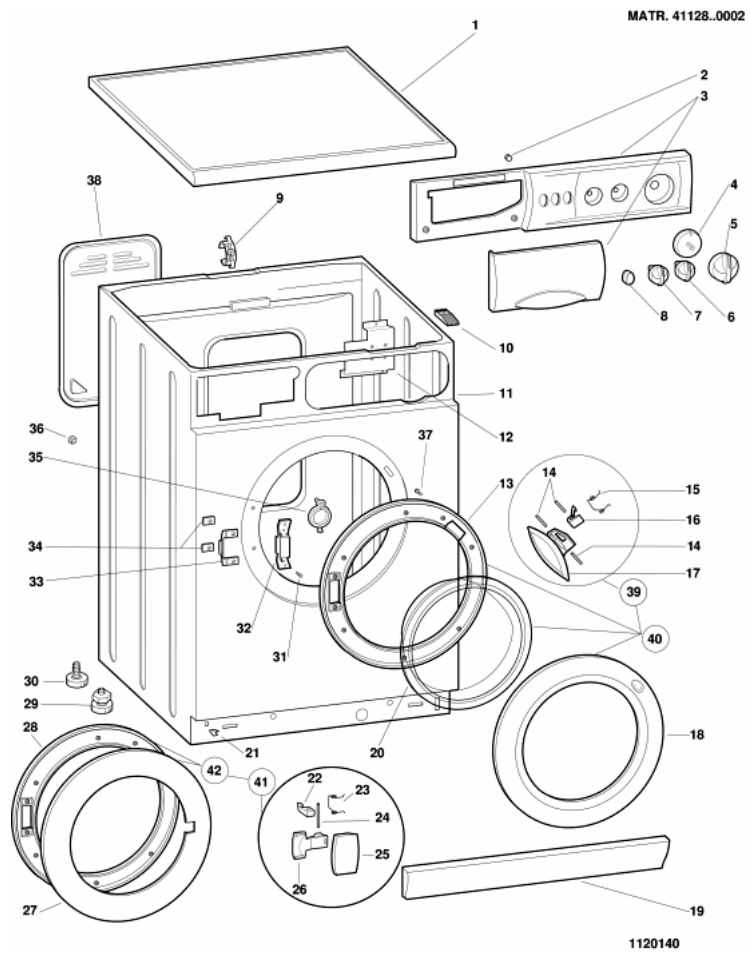
INDUSTRIAL CODE: list of variables of a model (shown into model label) where such spare is used; NOTICE: code of information(s) to refer to complete technical intervention, track for changes or to find correct spare part code.

6. Some notices, into a same section are generic therefore cannot be directly linked to a spare part. In order to assist a model in the best way as possible, it is helpful to pay attention to all notices and constantly verify documentation updates

7.Technical documentation cover shows model name and its commercial codes

pdf_tavola_title_ENG

cod. 1120140



Spare parts list

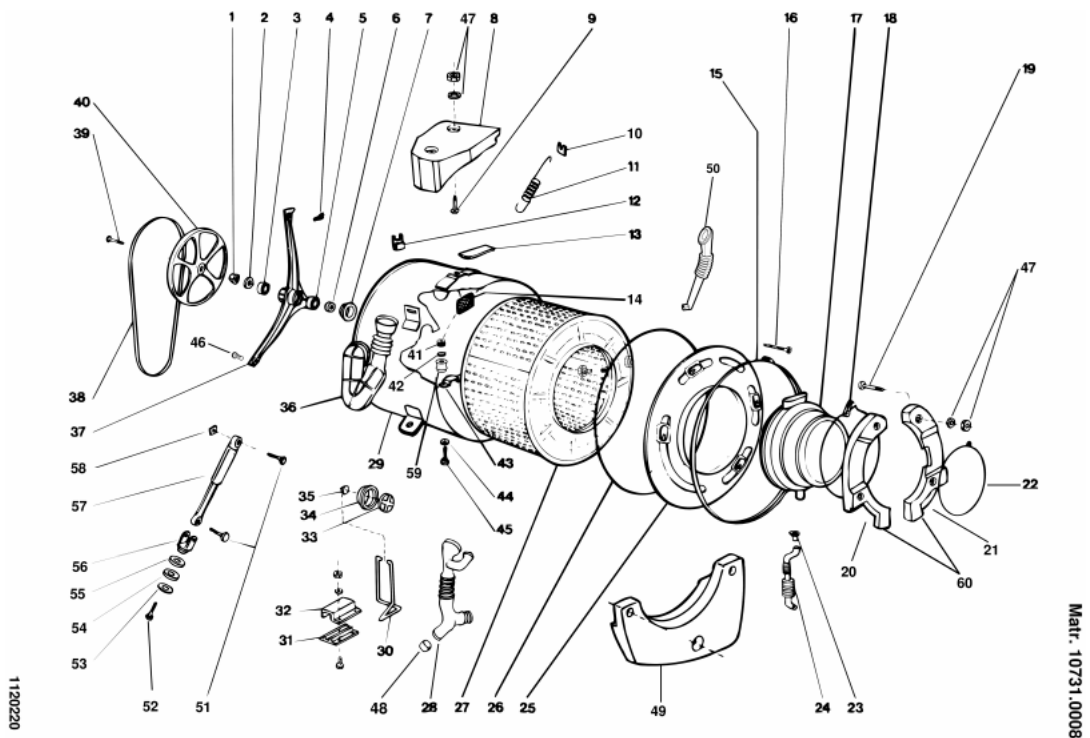
Spare parts list cod. 1120140

Ref.	Code	Substitute	Industrial code	Description	Notice
000	C00050112			instruction book 'gb - russo'	
000	C00064089			user instructions booklet it	
001	C00044821			worktop white giugiario (81022)530mmx597mm	n1040015
001	C00061932	1 C00044821		worktop white giugiario 540mm x 597mm	n1040015
003	C00050111	1 C00056687		control panel + handle giugiario	
004	C00044737			timer knob spacer giugiario 'wg1285wg'	
005	C00044877			timer knob white	
006	C00044820			t/stat or dryer knob white 27.	
008	C00044735			push button knob white giugiario	
009	C00019685			outlet hose holder	
009	C00024552			hose holder	
010	C00044769			worktop retainer	
011	C00045221			cabinet white giugiario kit	0112130
012	C00044623			timer support	
013	C00045240			inner door frame	
014	C00045244			door catch pivot pin giugiario	
015	C00045243			door handle spring giugiario	
016	C00045239			door catch striker	
017	C00045242			door handle giugiario white	
018	C00045241			outer door frame giugiario white	
019	C00044736			plinth white giugiario	
020	C00021880			door glass	
021	C00044819			clip	

029	C00046119		foot - rear	
029	C00046121		spring for foot mm	d = 12.2
029	C00046122	1 C00036019,1 C00056928	foot - front m 10	
031	C00019845		bolt t 1/2 t m4x8	
031	C00019846		bolt t 1/2 t m4x12	
031	C00056260	1 C00065185	bolt kfrfl tcbz 4.4 x 9 zcr (wg- 80525)	
032	C00043636		hinge plate outer case	
032	C00057567		hinge plate outer case (wg- 80525)	
033	C00045238		door hinge support	
035	C00046666		collar for drain hose	
036	C00003144		blanking plug 11mm	
037	C00012687		self-tapping screw tsp 3,5x13	
038	C00019664		rear cover - white	0112130
038	C00049515		rear cover - white 27	0112130

pdf_tavola_title_ENG

cod. 1120220



Spare parts list

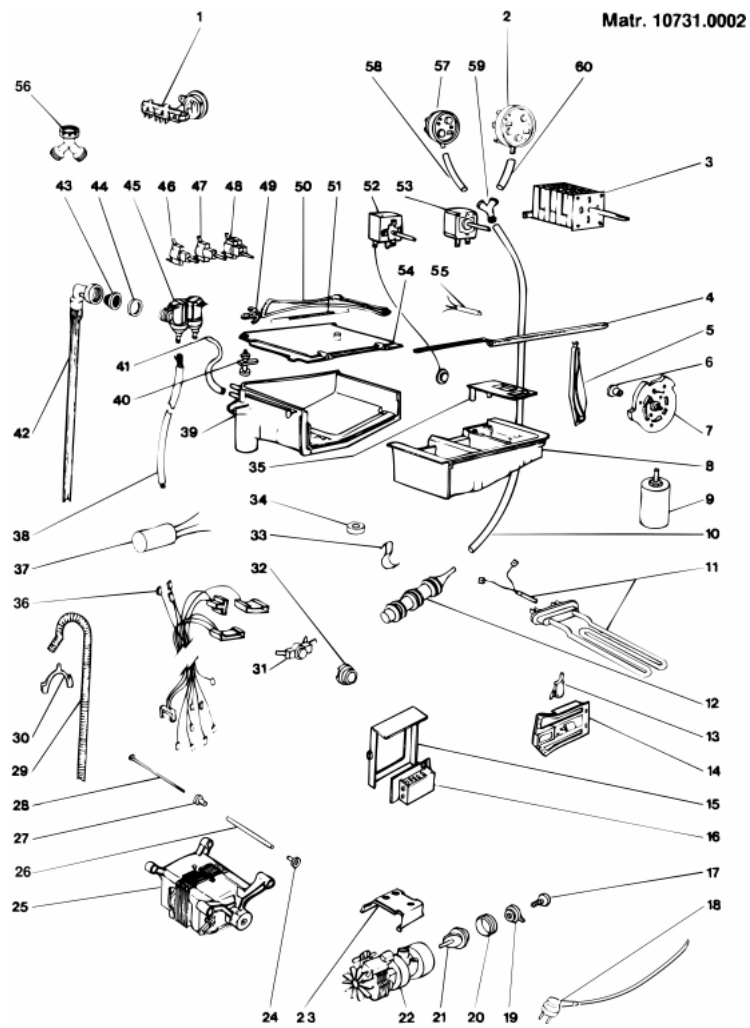
Spare parts list cod. 1120220

Ref.	Code	Substitute	Industrial code	Description	Notice
002	C00039670			washer-for pulley	
003	C00044765			bearing 6206-2z	
005	C00013563			bearing 25 x52 x 15 6205-2z	
006	C00044764	1 C00082696		standard oil seal 1100/1200 rpm	
008	C00032867			upper counterweight	
009	C00037346			nylon washer	
009	C00038865			bolt m8 x 60	
010	C00019675			anchorage pad - suspension spring	
011	C00021911	2 C00029165		tank spring red 129 mm	
012	C00019667			spider retaining bracket	
013	C00025208			counterweight pad	
014	C00002503			nut m5 zn-tro	
014	C00019716			seal'for element clamp'	
014	C00032849			lint filter	
014	C00044822			bolt stainless q.s. m5x20	
014	C00044823			washer 5,3x15x1,5	
015	C00003018			clamping band tank front	
016	C00023840			bolt m6 x 80 for clamping band tank front	
016	C00023841			nut for clamping band tank front	
017	C00045394			door bellows seal(detergent recovery hose)	
018	C00036780			bellows clamp (tank front)	
019	C00036952			bolt m8 x 45	
020	C00032866	1 C00045236		front counterweight left	n1040057

021	C00032865	1 C00045236	front counterweight right	n1040057
022	C00033041		clamping ring - bellows seal front 856mm	
024	C00019714		plastic ferrule-(door seal)/detgent recove	
024	C00030385		detergent recovery hose	
025	C00033090		tub front stainless	
026	C00020941		seal - tank front inox	
027	C00044762		inner drum - stainless	
028	C00027990		hose clamp 78-85 to tank	
028	C00045406		hose tank to filter (detergent recovery)	
029	C00046840		tub inox str. 42	
030	C00019696		spring clamp	
031	C00019676		plastic bush for spring clamp	
032	C00019666		saddle - spring clamp	
033	C00003036		friction pad	
034	C00003034		rubber cap for friction pad kit	
035	C00019677		sleeve - damper pad	
036	C00027492		hose dispenser to tank	0112090
036	C00052946		hose dispenser to tank (matr.70224)	0112090
037	C00018018	1 C00038358	bolt m8 x 18 te (dry loc)	n1040034
037	C00044763		bearing spider assembly	n1040034
038	C00029794		belt poly-v l= 1194 mm	
039	C00039671		bolt - drum pulley fixing	
040	C00044768		drum pulley	
041	C00030443	1 C00047136	nut romob m8	
041	C00037135		self-locking nut m4	
042	C00037142	1 C00037132	washer 4x12x1 stainless	
043	C00037083	1 C00037177	heater bracket	
044	C00037133	1 C00037132	seal	
045	C00037132		bolt + washer m4x12x1 (stainless)	
046	C00038358		bolt m8x16 (dry loc)	
047	C00019849		washer 37x8,5x2	
048	C00030389		plastic ferrule(bellows seal)- tank/pump	
049	C00066404	2 C00036952,1 C00052574	front counterweight 8 kg	
059	C00058523		pillar retainer-heating element	
099	C00001109		loctite 270 10 gr.	
099	C00033026		amblijon grease ta 100 gr.	

pdf_tavola_title_ENG

cod. 1120320



Spare parts list

Spare parts list cod. 1120320

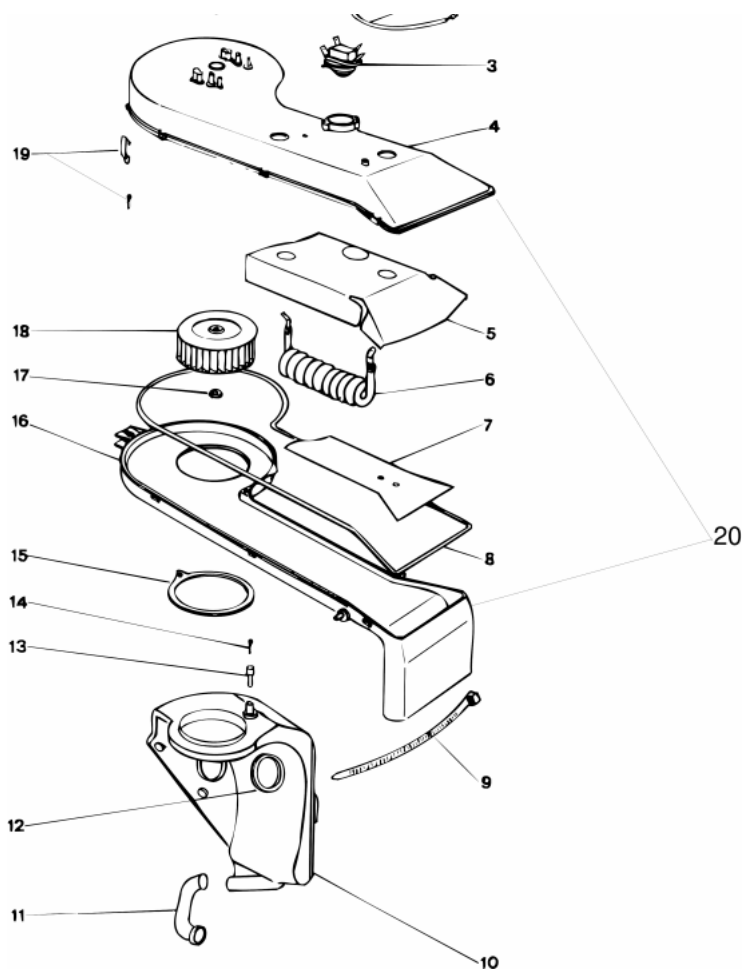
Ref.	Code	Substitute	Industrial code	Description	Notice
001	C00029204			terminal block box elettrogibi	0112130
001	C00041163			terminal block	0112130
002	C00031084			pressure switch 2 level	
003	C00033059			timer eaton ec 4254.02	
004	C00031068			metal operating rod diverter	
005	C00023848			cam follower	
006	C00031082			bush for timer cam black	
007	C00031495			timer cam elbi 1388	
008	C00046423			detergent drawer (50410)	
010	C00041192			air trap hose 370 mm.	
010	C00041785			air trap hose 540 mm.	
011	C00033055			heating element+ternal cut-out 2000w/230v	
012	C00019730			air trap	
014	C00011140			door interlock flange black	
015	C00021684			bracket for module	
016	C00033056			electronic module 1000-1200 rpm	
017	C00043738			screw filter handle	
018	C00008372	1 C00022357		supply cable 3 x 1 nf	
019	C00034495			filter handle	
020	C00034496			filter seal	
021	C00034494	2 C00103447		filter element plaset	
022	C00043725			self cleaning pump 230v. 50 hz	
024	C00019682			rubber bush 20 mm - motor	

025	C00028595		brush for commut.motor ceset mca38-52/64	
025	C00043430		tacho generator black for ice motor	
025	C00046626		motor	
025	C00047317		brush for motor (ice).940n2101/940n1i01	
026	C00019965		spacer tube for motor support	
028	C00019964		motor bolt m6 x 212 te	
029	C00027466		drain hose - to sink l=1860mm	0112130
029	C00058651		drain hose (plastic)	0112130
030	C00019902		plastic -u- to make drain hose hook	
031	C00015858		thermostat 1t 40 c na	
032	C00014917		grommet - thermostat	
033	C00044808		air trap clip	
034	C00019755		anti-vibration bush (foam)	
035	C00044800		additive cover	
036	C00050113		wiring + timer eaton 4254.02	
037	C00008663		bracket - interference suppressor	
037	C00047063	1 C00043435	radio interference suppressor	
038	C00033078		hose electrovalve condenser	
039	C00046621		dispenser body + top	0112090
039	C00052945		dispenser top (matr. 70224)	0112090
040	C00021662		dispenser cold water	
041	C00015498		hose - valve/dispenser (hot) l=600mm	
042	C00003070		mains inlet hose cold 25c 10bar 1500 mm	
043	C00005781		inlet hose filter	
044	C00005572		sealing washer-mains inlet hose	
045	C00021864		electrovalve 2 way 10lt (cold)	
046	C00030358		on-off switch(na+na 2pole e0040)	
047	C00030357		pb/switch(ch/over 1 pole e1533) nc+na	
048	C00031061		switch nc sin.pole e1284	
049	C00028569		diverter quadrant 19 teeth	
050	C00028568		diverter pivot arm 18 teeth	
051	C00019708		dispenser spring	
052	C00033058		adjustable thermostat	
053	C00032173		dryer timer	
053	C00046664		bolt m4 x 6 tsp	
054	C00044858	1 C00020878	dispenser top	0112090
055	C00019749		indicator lamp	

057	C00043722	pressure switch 1 level 130/100+over flow
058	C00030387	pressure switch hose 150 mm
059	C00021774	y junction pressure switch hose

pdf_tavola_title_ENG

cod. 1120420



Spare parts list

Spare parts list cod. 1120420

Ref.	Code	Substitute	Industrial code	Description	Notice
------	------	------------	-----------------	-------------	--------

001	C00032859		motor blower 230v. 50hz.	0112090,0112090,0112102, 0112102,0112102,0112102,
001	C00052947	1 C00056344	motor blower 230v. 50hz. (70224)	0112090,0112090,0112102, 0112102,0112102,0112102,
001	C00056028		screw torx m4 x 46 bz	0112090,0112090,0112102, 0112102,0112102,0112102,
001	C00056344		motor blower 230v 50hz (71222)	0112090,0112090,0112102, 0112102,0112102,0112102,
002	C00032843		thermal cut-out cable	
003	C00032861		thermostat 85-125 nc	
004	C00032854	1 C00054789	blower manifold top	0112090,0112102
006	C00032858		heating 1000w./230v.	
008	C00032847		blower manifold seal	
009	C00033210		hose clamp fastex 350 mm x 7.8 mm	
010	C00032863		steam condenser	
011	C00032862		hose - condenser / tank	
012	C00032871		seal - condenser / tank	
013	C00032845		restrictor seat	
014	C00032846		restrictor 0,45 lt/min	
015	C00032844		seal - condenser / tank	
016	C00032855	1 C00054789	blower manifold - lower	0112102
017	C00032972		blower fixing nut	
018	C00021885		blower fan	
019	C00032856		manifold spring	0112090,0112102,0112102
019	C00054790		screw trilob m5 x 16 tcb t.e. st	0112090,0112102,0112102
020	C00054789		blower manifold kit	0112090,0112102

Notices**n1040015****Top depth reduction**

Top depth was reduced in Super-Margherita and Giugiaro washing machines, with serial number 81012.0001 and 81022.0001, respectively.

The new tops are interchangeable with the pre-modification ones and the SAT codes 046139 (530 mm depth) for Super-Margherita and 044821 (530 mm depth) for Giugiaro remain unchanged (Historical consumption requirement).

Due to the presence of large stocks, the pre-modification tops 061931 Super-Margherita (540 mm depth) and 061932 (544 mm depth) Giugiaro were re-coded.

n1040034**New aluminium tub in replacement of cast-iron tub**

Beginning from serial no. 90412.0001 the cast-iron tub star wheel code 044763 will be produced in aluminium in the washing machines and washer-dryers.

The new star wheel is interchangeable with the premodification one and the SAT code remains unchanged.

In order to avoid any balancing problem of the oscillating group when the aluminium star wheel replaces the cast-iron star wheel, it is necessary to move the position of the tub springs forward by one step (rear part in the cabinet and front part in the tub bracket).

n1040057**Front counterweight with two fixing points.**

Beginning with serial no. 91129.0001, a single 8 kg counterweight part no. 066404 was used on WGD834TR (18063), WGD836S (18259), WGD835TX (18020) and WGD934TXR (18064) Washer-Dryers, instead of the two front counterweights part nos. 032865 and 032866.

During production, to apply the new counterweight, a new tub cover was used with two brackets rather than four.

For Technical Assistance, the pre-modification cover (with four brackets) will continue to be handled because to fix the new counterweight, the two brackets are used and positioned on the lower part of the cover (the opposite area to the positioning tab).

The part nos. to use on the modified appliances are as follows:

Models with enamelled tub.

032870 - Enamelled tub cover with 4 brackets;

066404 - 8 kg front counterweight;

038672 - M8 X 55 screw(X2);

049071 - Tub suspension spring (X2);

013579 - Enamelled tub cover gasket.

Models with stainless steel tub.

033090 - Stainless steel tub cover 4 brackets;

066404 - 8 kg front counterweight;

038672 - 8 X 55 screw(X2);

020941 - Stainless steel tub cover gasket.

In the future the modification will be extended to other models which will be related to this notice.

0112090

HERMETICALLY SEALED BLOWER UNIT

Beginning with serial number 70714.0001 for washer-dryers

WD850XPE, WGD836TU, WGD1236TXU, WD2260, WGD835TX,

WGD836TXU and WGD1135TXSK, the following components have been used to hermetically seal the blower group and prevent the leakage of soap suds due to the excessive formation of foam.

Code 052946 - Dispenser-Tank Hose + breather hole;

Code 052947 - Fan motor with rubber gasket;

Code 032854 - Upper blower body;

Code 052948 - Dispenser + coperchio WD--C Lid;

Code 052945 - Dispenser + WGD--C Lid;

On the top part of the blower group, the breather hole was closed on the inside of the small cylinder extending from the top surface. The new component is interchangeable with the pre-modification part by re-opening the breather hole with a 6 mm drill bit (in order to avoid pressure buildup), it has the same SAT code: 032854.

0112102

MODIFIED BLOWER BODIES AND FAN MOTOR

Beginning with serial no. 71222.0001, the top and bottom blower casings are now being made of aluminium, instead of zamak, and are used on all washer-dryers . In addition, a new fan motor is being used secured with four fastening screws.

The assembly of the two new blower bodies (part no. 054789) is done using seven torx screws (part no. 054790) instead of the clamps (part no. 032856).

Therefore, the individual parts are not interchangeable with the pre-modification ones.

However, the blowers are interchangeable if they are already assembled and the new fan motor is used.

Until all of the stock has been used, the kit will include the blower units made of zamak, secured with fastening clips.

The new fan motor (part no. 056344) fastened now with four screws (part no. 056028) can be used in place of the pre-modification motor, but not vice versa.

The motor (part no. 052947) will be handled as a spare part until all of the stock is used up.

0112130

Beginning with serial no. 80825.0001 on the Giugiaro washing machines and washer dryers, (WG and WDG), the rear cover, outlet hose, terminal block and cushion frame cabinet have been changed.

The items subjected to new modifications are:-

Cod. 049515 Rear cover;

Cod. 058651 Outlet hose;

Cod. 041163 Terminal block.

The modified cabinet keeps the same SAT code as the pre-modification ones(045221), and in order to maintain the same interchangeability, it is handled assembled with rear panel and terminal block.

n1040015

Top depth reduction

Top depth was reduced in Super-Margherita and Giugiaro washing machines, with serial number 81012.0001 and 81022.0001, respectively.

The new tops are interchangeable with the pre-modification ones and the SAT codes 046139 (530 mm depth) for Super-Margherita and 044821 (530 mm depth) for Giugiaro remain unchanged (Historical consumption requirement).

Due to the presence of large stocks, the pre-modification tops 061931 Super-Margherita (540 mm depth) and 061932 (544 mm depth) Giugiaro were re-coded.

n1040034

New aluminium tub in replacement of cast-iron tub

Beginning from serial no. 90412.0001 the cast-iron tub star wheel code 044763 will be produced in aluminium in the washing machines and washer-dryers.

The new star wheel is interchangeable with the premodification one and the SAT code remains unchanged.

In order to avoid any balancing problem of the oscillating group when the aluminium star wheel replaces the cast-iron star wheel, it is necessary to move the position of the tub springs forward by one step (rear part in the cabinet and front part in the tub bracket).

n1040057

Front counterweight with two fixing points.

Beginning with serial no. 91129.0001, a single 8 kg counterweight part no. 066404 was used on WGD834TR (18063), WGD836S (18259), WGD835TX (18020) and WGD934TXR (18064) Washer-Dryers, instead of the two front counterweights part nos. 032865 and 032866.

During production, to apply the new counterweight, a new tub cover was used with two brackets rather than four.

For Technical Assistance, the pre-modification cover (with four brackets) will continue to be handled because to fix the new counterweight, the two brackets are used and positioned on the lower part of the cover (the opposite area to the positioning tab).

The part nos. to use on the modified appliances are as follows:

Models with enamelled tub.

032870 - Enamelled tub cover with 4 brackets;

066404 - 8 kg front counterweight;

038672 - M8 X 55 screw(X2);

049071 - Tub suspension spring (X2);

013579 - Enamelled tub cover gasket.

Models with stainless steel tub.

033090 - Stainless steel tub cover 4 brackets;

066404 - 8 kg front counterweight;

038672 - 8 X 55 screw(X2);

020941 - Stainless steel tub cover gasket.

In the future the modification will be extended to other models which will be related to this notice.

0112090

HERMETICALLY SEALED BLOWER UNIT

Beginning with serial number 70714.0001 for washer-dryers

WD850XPE, WGD836TU, WGD1236TXU, WD2260, WGD835TX,

WGD836TXU and WGD1135TXSK, the following components have been used to hermetically seal the blower group and prevent the leakage of soap suds due to the excessive formation of foam.

Code 052946 - Dispenser-Tank Hose + breather hole;

Code 052947 - Fan motor with rubber gasket;

Code 032854 - Upper blower body;

Code 052948 - Dispenser + coperchio WD--C Lid;

Code 052945 - Dispenser + WGD--C Lid;

On the top part of the blower group, the breather hole was closed on the inside of the small cylinder extending from the top surface. The new component is interchangeable with the pre-modification part by re-opening the breather hole with a 6 mm drill bit (in order to avoid pressure buildup), it has the same SAT code: 032854.

0112102

MODIFIED BLOWER BODIES AND FAN MOTOR

Beginning with serial no. 71222.0001, the top and bottom blower casings are now being made of aluminium, instead of zamak, and are used on all

washer-dryers . In addition, a new fan motor is being used secured with four fastening screws.

The assembly of the two new blower bodies (part no. 054789) is done using seven torx screws (part no. 054790) instead of the clamps (part no. 032856).

Therefore, the individual parts are not interchangeable with the pre-modification ones.

However, the blowers are interchangeable if they are already assembled and the new fan motor is used.

Until all of the stock has been used, the kit will include the blower units made of zamak, secured with fastening clips.

The new fan motor (part no. 056344) fastened now with four screws (part no. 056028) can be used in place of the pre-modification motor, but not vice versa.

The motor (part no. 052947) will be handled as a spare part until all of the stock is used up.

0112130

Beginning with serial no. 80825.0001 on the Giugiaro washing machines and washer dryers, (WG and WDG), the rear cover, outlet hose, terminal block and cushion frame cabinet have been changed.

The items subjected to new modifications are:-

Cod. 049515 Rear cover;

Cod. 058651 Outlet hose;

Cod. 041163 Terminal block.

The modified cabinet keeps the same SAT code as the pre-modification ones(045221), and in order to maintain the same interchangeability, it is handled assembled with rear panel and terminal block.

Legend

Legend: 112201a

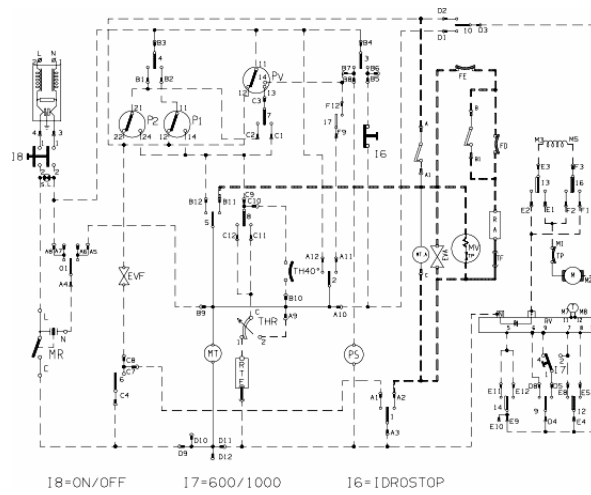
AQS	Aquastop electrovalve	Mzbn/MTA	zbn timer motor
B	Buzzer	N	Neutral or Terminal Board
BC		NC	Spin cycle exclusion
BF	Terminal board contact, motor fan and dryer heating	P	Pressure switch
BP	Buzzer	PA	High speed potentiometer
C	Condensator	PB	Low speed potentiometer
CA	Condensator	PL	Pure Wool
DV	Switching device	PM	Motor Thermoprotector
EF/CL	Electro-Valve Cold Water / Bleach	PR	Timer programmer or Pressure switch
EF/L	Electro-Valve Cold Water / Wash	PS	Drain pump
EF/P	Electro-Valve Cold Water / Prewash	P1	1st level pressure cut-off switch
ER	Exclude Heating Element	P2	2nd level pressure cut-off switch
ET	Thermostat disactivation	R	Heating element
EV	Electrovalve	Ras/RA	Dryer heating element
EVA	Dryer electrovalve	RE	Relay
EVC	Hot water electrovalve	RR	Heating element
EVF	Elettrovalvola acqua fredda	RV	Speed regulator
EVL	Wash electrovalve	S	LED
EVP	Pre Wash electrovalve	SL	Line LED
FA	Antijamming filter	SO	Door LED
FD	Delicate drying cycle thermostat	SR	Heating LED
FE	Strong drying cycle thermostat	ST	Temperature selector
FRT	Thermofusible Heating Element	SV	Speed Selector for Spin
I	Inverter	T	Timer contacts
IA	Switch On/Off	TA	Drying timer contacts

IC	Switch N.C. - 1/2 Load	TB	Low Temperature Thermostat
ID	Switch display	TC	Spider wheel earth
IE	Water Saving Device	TFL	Flange earth
IF	Switch - Spin Reduction	TG	Main earth
IP	Door switch	TH	Thermostat
IR	Line switch	THF	Operating thermostat
IS	Water-stop	THR	Adjustable thermostat
I1..2..3..	Switches/switching devices	TH1	1st temperature thermostat
L	Line or Lamp	TH2	2nd temperature thermostat
LB	Low Level	TH3	3rd temperature thermostat
LN	Normal Level	TM	Motor earth
LS	Pilot lamp	TMB	Main cabinet earth
M	Earth-symbol	TMP	Motor thermal protector
MC	Spin cycle motor	TMS	Thermostop
MI	MOTOR WITH PULLEY	TP	Thermal protector
ML	Wash cycle motor	TPS	Drain pump earth
MO	Terminal Board	TR	Heating element earth
MP	Door dip-switch	TS	Safety thermostat
MR	Thermal Lock	TT	Timer earthing connection
MT	Timer motor	TTH	Earthing Thermostat
MV	Motor fan	TV	Tank earth
MV -Ras	Dryer heating element	ZBN	Timer
B	Buzzer	N	Neutral or Terminal Board
BF	Terminal board contact, motor fan and dryer heatin	NC	Spin cycle exclusion
BP	Buzzer	P	Pressure switch
C	Condensator	PA	High speed potentiometer
CA	Condensator	PB	Low speed potentiometer
DV	Switching device	PL	Pure Wool
EF/CL	Electro-Valve Cold Water / Bleach	PM	Motor Thermoprotector
EF/L	Electro-Valve Cold Water / Wash	PR	Timer programmer
EF/P	Electro-Valve Cold Water / Prewash	PS	Drain pump
ER	Exclude Heating Element	P1	1st level pressure cut-off switch
ET	Thermostat disactivation	P2	2nd level pressure cut-off switch
EV	Electrovalve	R	Heating element
EVA	Dryer electrovalve	Ras/RA	Dryer heating element
EVC	Hot water electrovalve	RE	Relay
EVF	Elettrovalvola acqua fredda	RR	Heating element

EVL	Wash electrovalve	RV	Speed regulator
EVP	Pre Wash electrovalve	S	LED
FA	Antijamming filter	SL	Line LED
FD	Delicate drying cycle thermostat	SO	Door LED
FE	Strong drying cycle thermostat	SR	Heating LED
FRT	Thermofusible Heating Element	ST	Temperature selector
I	Inverter	SV	Speed Selector for Spin
IA	Switch On/Off	T	Timer contacts
IC	Switch N.C. - 1/2 Load	TA	Drying timer contacts
ID	Switch display	TB	Low Temperature Thermostat
IE	Water Saving Device	TC	Spider wheel earth
IF	Switch - Spin Reduction	TFL	Flange earth
IP	Door switch	TG	Main earth
IR	Line switch	TH	Thermostat
IS	Water-stop	THF	Operating thermostat
I1..2..3..	Switches/switching devices	THR	Adjustable thermostat
L	Line or Lamp	TH1	1st temperature thermostat
LB	Low Level	TH2	2nd temperature thermostat
LN	Normal Level	TH3	3rd temperature thermostat
LS	Pilot lamp	TM	Motor earth
M	Earth-symbol	TMB	Main cabinet earth
MC	Spin cycle motor	TMP	Motor thermal protector
MI	MOTOR WITH PULLEY	TMS	Thermostop
ML	Wash cycle motor	TP	Thermal protector
MO	Terminal Board	TPS	Drain pump earth
MP	Door dip-switch	TR	Heating element earth
MR	Thermal Lock	TS	Safety thermostat
MT	Timer motor	TT	Timer earthing connection
MV	Motor fan	TTH	Earthing Thermostat
MV -Ras	Dryer heating element	TV	Tank earth
Mzbn/MTA	zbn timer motor	ZBN	Timer

Electric schemes and links

Cod. 112217b



Legend

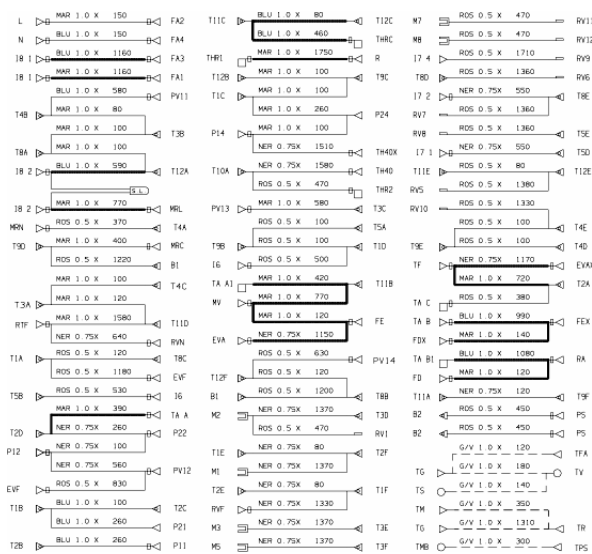
Legend: 112217b

B	Buzzer	N	Neutral or Terminal Board
BF	Terminal board contact, motor fan and dryer heating	NC	Spin cycle exclusion
BP	Buzzer	P	Pressure switch
C	Condensator	PA	High speed potentiometer
CA	Condensator	PB	Low speed potentiometer
DV	Switching device	PL	Pure Wool
EF/CL	Electro-Valve Cold Water / Bleach	PM	Motor Thermoprotector
EF/L	Electro-Valve Cold Water / Wash	PR	Timer programmer
EF/P	Electro-Valve Cold Water / Prewash	PS	Drain pump
ER	Exclude Heating Element	P1	1st level pressure cut-off switch
ET	Thermostat disactivation	P2	2nd level pressure cut-off switch
EV	Electrovalve	R	Heating element
EVA	Dryer electrovalve	Ras/RA	Dryer heating element
EVC	Hot water electrovalve	RE	Relay
EVF	Elettrovalvola acqua fredda	RR	Heating element
EVL	Wash electrovalve	RV	Speed regulator
EVP	Pre Wash electrovalve	S	LED
FA	Antijamming filter	SL	Line LED
FD	Delicate drying cycle thermostat	SO	Door LED
FE	Strong drying cycle thermostat	SR	Heating LED
FRT	Thermofusible Heating Element	ST	Temperature selector
I	Inverter	SV	Speed Selector for Spin
IA	Switch On/Off	T	Timer contacts
IC	Switch N.C. - 1/2 Load	TA	Drying timer contacts
ID	Switch display	TB	Low Temperature Thermostat

IE	Water Saving Device	TC	Spider wheel earth
IF	Switch - Spin Reduction	TFL	Flange earth
IP	Door switch	TG	Main earth
IR	Line switch	TH	Thermostat
IS	Water-stop	THF	Operating thermostat
11..2..3..	Switches/switching devices	THR	Adjustable thermostat
L	Line or Lamp	TH1	1st temperature thermostat
LB	Low Level	TH2	2nd temperature thermostat
LN	Normal Level	TH3	3rd temperature thermostat
LS	Pilot lamp	TM	Motor earth
M	Earth-symbol	TMB	Main cabinet earth
MC	Spin cycle motor	TMP	Motor thermal protector
MI	MOTOR WITH PULLEY	TMS	Thermostop
ML	Wash cycle motor	TP	Thermal protector
MO	Terminal Board	TPS	Drain pump earth
MP	Door dip-switch	TR	Heating element earth
MR	Thermal Lock	TS	Safety thermostat
MT	Timer motor	TT	Timer earthing connection
MV	Motor fan	TTH	Earthing Thermostat
MV -Ras	Dryer heating element	TV	Tank earth
Mzbn/MTA	zbn timer motor	ZBN	Timer

Electric schemes and links

Cod. 112217c



Legend

Legend: 112217c

B	Buzzer	N	Neutral or Terminal Board
BF	Terminal board contact, motor fan and dryer heating	NC	Spin cycle exclusion
BP	Buzzer	P	Pressure switch
C	Condensator	PA	High speed potentiometer
CA	Condensator	PB	Low speed potentiometer
DV	Switching device	PL	Pure Wool
EF/CL	Electro-Valve Cold Water / Bleach	PM	Motor Thermoprotector
EF/L	Electro-Valve Cold Water / Wash	PR	Timer programmer
EF/P	Electro-Valve Cold Water / Prewash	PS	Drain pump
ER	Exclude Heating Element	P1	1st level pressure cut-off switch
ET	Thermostat disactivation	P2	2nd level pressure cut-off switch
EV	Electrovalve	R	Heating element
EVA	Dryer electrovalve	Ras/RA	Dryer heating element
EVC	Hot water electrovalve	RE	Relay
EVF	Elettrovalvola acqua fredda	RR	Heating element
EVL	Wash electrovalve	RV	Speed regulator
EVP	Pre Wash electrovalve	S	LED
FA	Antijamming filter	SL	Line LED
FD	Delicate drying cycle thermostat	SO	Door LED
FE	Strong drying cycle thermostat	SR	Heating LED
FRT	Thermofusible Heating Element	ST	Temperature selector
I	Inverter	SV	Speed Selector for Spin
IA	Switch On/Off	T	Timer contacts
IC	Switch N.C. - 1/2 Load	TA	Drying timer contacts
ID	Switch display	TB	Low Temperature Thermostat

IE	Water Saving Device	TC	Spider wheel earth
IF	Switch - Spin Reduction	TFL	Flange earth
IP	Door switch	TG	Main earth
IR	Line switch	TH	Thermostat
IS	Water-stop	THF	Operating thermostat
11..2..3..	Switches/switching devices	THR	Adjustable thermostat
L	Line or Lamp	TH1	1st temperature thermostat
LB	Low Level	TH2	2nd temperature thermostat
LN	Normal Level	TH3	3rd temperature thermostat
LS	Pilot lamp	TM	Motor earth
M	Earth-symbol	TMB	Main cabinet earth
MC	Spin cycle motor	TMP	Motor thermal protector
MI	MOTOR WITH PULLEY	TMS	Thermostop
ML	Wash cycle motor	TP	Thermal protector
MO	Terminal Board	TPS	Drain pump earth
MP	Door dip-switch	TR	Heating element earth
MR	Thermal Lock	TS	Safety thermostat
MT	Timer motor	TT	Timer earthing connection
MV	Motor fan	TTH	Earthing Thermostat
MV -Ras	Dryer heating element	TV	Tank earth
Mzbn/MTA	zbn timer motor	ZBN	Timer